



# GMT MONTHLY MEMBERSHIP PROGRESS REPORT

Results as of: 2/29/2020

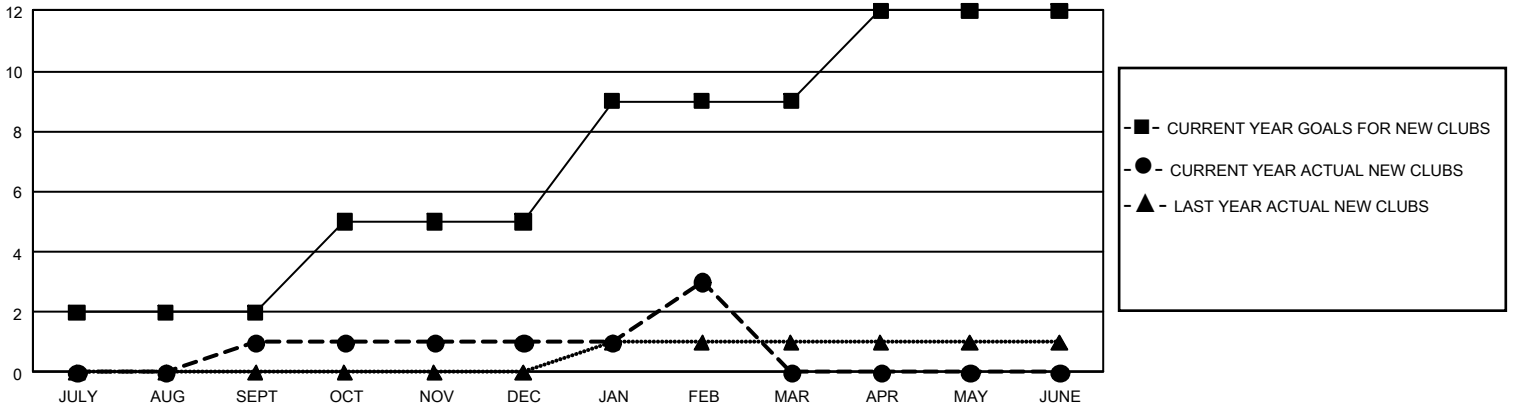
## GMT Constitutional Area 5 - J, Group G

GMT: OPEN

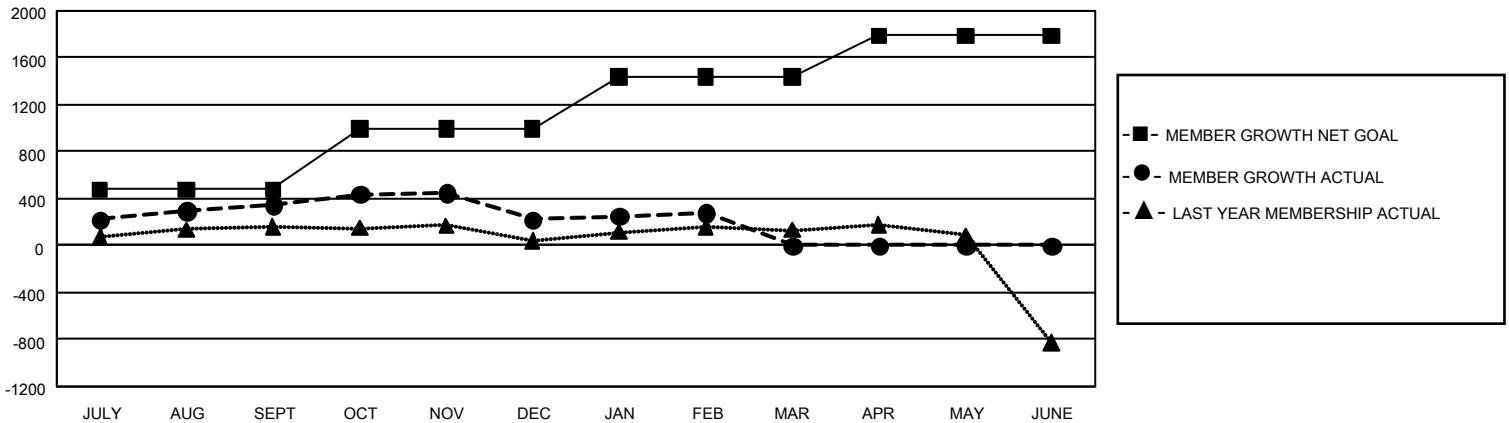
REPORT DOES NOT INCLUDE CLUBS IN UNDISTRICTED AREAS.

Clubs				Members			
RESULTS FOR 2019-2020				RESULTS FOR 2019-2020			
QUARTER	NEW CLUB GOAL	NEW CLUBS	DROPPED CLUBS	QUARTER	MEMBER GROWTH NET GOAL	MEMBER GROWTH ACTUAL	DROPPED MEMBERS ACTUAL (including transfers)
JULY/AUG/SEPT	6	1	3	JULY/AUG/SEPT	1,425	735	315
OCT/NOV/DEC	9	0	1	OCT/NOV/DEC	1,560	321	440
JAN/FEB/MAR	12	2	1	JAN/FEB/MAR	1,335	219	159
APR/MAY/JUNE	9	0	0	APR/MAY/JUNE	1,047	0	0

**GOALS AND ACTUAL NEW CLUBS CUMULATIVE**



**GOALS AND ACTUAL MEMBERS CUMULATIVE**



<b>DROPPED CLUBS: 5</b>	<b>373 CLUBS OF 635 ADDED 1 OR MORE NEW MEMBERS</b>	<b><u>GENDER DISTRIBUTION</u></b> MALE            15,281 (78.81%) FEMALE         4,109 (21.19%)
<b><u>DROPPED MEMBERS</u></b> DECEASED            108 CLUB CANCELLED      20 OTHER                 786 <hr/> TOTAL                 914	<a href="#">CLICK HERE FOR CUMULATIVE MEMBERSHIP DATA</a>	TOTAL FAMILY UNIT MEMBERS            6,009  FAMILY MEMBERS PAYING HALF DUES      3,450